

# HARDWOOD FLOORING

## TECHNICAL DETAILS



Color: Sepia

Layout:



Pattern: Plank

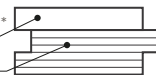
### 1. PRODUCT INFO

Species	White European Oak
Finish	UV Silk
Structure	Engineered (2-layer)
Joint	T&G
Bevel	Micro (0,5 mm)
Surface	Light Brush
Grade	Character
<b>DIMENSIONS</b>	
Thickness	15 mm (5/8")
Width	190 mm (7,5")
Row Length	1900 mm (6,25')
Shorts	25%

### 2. STRUCTURE

2-layer Engineered Construction \*

Solid wood 4 mm \*\*  
Plywood \*\*\*



\* High Balance and Stability  
\*\* Saw Cut White European Oak  
\*\*\* Birch water resistant plywood

### 3. PACKAGING

<b>BOX</b>	<b>PALLET</b>
2,888 m <sup>2</sup> (31 ft <sup>2</sup> )	115,52 m <sup>2</sup> (1243 ft <sup>2</sup> )
Dimensions (T <sub>W</sub> L): 125 x 200 x 1915 mm (5"*7,9"*6,3')	Dimensions (L <sub>W</sub> H): 1930 x 1030 x 1050 mm (6,4'*3,4'*3,45')
Weight: 32 kg (71 lb)	Weight: 1294 kg (2852 lb)

### 4. FINISH

Sheen \ Gloss	Matte
Look	Semi-open pores, wire brushed
Feeling	Transfer warmth of natural wood
Type	UV cured modified polyurethane-acrylate
Wear resistance	High
Scratch resistance	Medium
Slip resistance	50 (SRV dry)
Resistance to chemical agents	Class 5 (Except blue ink)
Maintanance	Maintanance free
Repairability	Easy

### 5. DESCRIPTION

Name	Character
Color variation	
Knots	
Other	

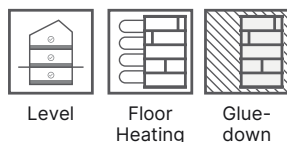
Character Grade creates an effect of antique wood and emphasizes authentic natural oak texture. Planks may contain diverse color variation, sapwood, unlimited burls, brown streaks, tight knots and properly filled open knots, warm holes as well as other imperfections in the face work (torn grain) to design advantage.

### 6. TECHNICAL INFORMATION

Characteristics (EN 14342)		Deviations (EN 13489)	
Formaldehyde emission class	E1; ULEF	Deviation on Thickness	0,2 mm
Pentachlorophenol content	None	Deviation on Width	0,2 mm
Thermal resistance	0,118 m <sup>2</sup> K\W	Height Difference	0,2 mm
Thermal conductivity	0,161 W\ (m K)	Cup	<0,2% of width
Fire resistance	Dfl-s1	Bow	<0,5% of length
		Spring	<0,1% of length

## PRODUCT USE

### 7. INSTALLATION



Glue down over concrete, plywood or wooden subfloor or nail down over wooden subfloor. Semifloating installation as well.  
Applicable above, on and below ground level.  
Suitable for underfloor heating.

### 8. STORAGE & USE

Air Humidity 40-65%	Temperature +18°C ... +22°C (64°F ... 72°F)

### 9. CARE & MAINTENANCE

Maintenance of hardwood floors with UV Silk assumes normal (daily if necessary) cleaning from dust and grit using a vacuum, followed by a thorough cleaning with floor cleaner. Floor surface areas that receive the most traffic and get worn down quicker, such as areas by the front door, hallways, kitchens etc. Should be periodically renewed with oil.

### 10. DESCRIPTIONS & IMAGERY

Flooring colors displayed in digital platforms may vary according to the color settings of the monitor you are using.



ME Decor Group OÜ  
Kopli 27, 10412, Tallinn, Estonia  
VAT EE102590311  
E-mail: info@me-decor.com  
www.me-floor.com  
Inst.: @me\_floor\_



NO ADDED formaldehyde



WARRANTY